

# DAVID NOLAN GALLERY

## DIGGING

Julia Fish  
George Grosz  
Ian Hamilton Finlay  
David Hartt  
Jörg Immendorff  
Mel Kendrick  
Barry Le Va  
Markus Lüpertz  
Gordon Matta-Clark  
Jonathan Meese  
Ciprian Mureşan  
Norberto Nicola  
Jim Nutt  
Paulo Pasta  
A.R. Penck  
Dorothea Rockburne  
Dieter Roth  
Jorinde Voigt

April 1 – April 27, 2023

*'Between my finger and my thumb  
The squat pen rests'*

*Digging: Excavation, breaking or cutting off the surface.*

As with the quote from Irish poet Seamus Heaney, a writer digs with their pen, and artists with their tools.

David Nolan Gallery is pleased to present a group show of artists who have exhibited at the gallery over the years. Through comparisons, the exhibition will encourage new visual and intellectual readings. The approach of creating trans-generational, cross-cultural, and multimedia juxtapositions has been the gallery's underlying backbone for over thirty years.

The ultra-individualistic performance artist, energetic writer, and important painter Jonathan Meese (German, b. 1970) creates works that frequently include wordplays but his motivation, like Jörg Immendorff (German, 1945-2007), is the artists role in society. As with their predecessor Georg Grosz (German, 1893-1959), who was also a social critic, both Meese and Immendorff's work drew from the belief that society without art is impossible to imagine. The painting included here is by Immendorff from his famous *Café Deutschland* series that began in 1977 and through the 80s and on. His friendship with A.R. Penck (German, 1939-2017), who

lived on the other side of the Berlin Wall, became an example of the futility of borders and despot regimes that discouraged free speech and superficially divided a nation and its citizens by a wall which Immendorff came to use as a symbol of futility. Dieter Roth (German 1930-1998) believed in the courage of the artists and art and as a maverick, musician, poet, and artist. His attitude as a multi-media artist with worldwide influence spanning generations is also close to Meese in attitude and depth.

The movement and visual rhythms in Jorinde Voigt's (German, b. 1977) diagrammatic work stems from her history as a musician. In her newest works, she begins with a sheet of paper, draws on it, then slices, cuts, and repositions it in multiple layers that become ripples of water dancing in the sea, full of movement. Voigt's collage is installed beside Barry Le Va's (American, 1941-2021) complex architectural installations and arrangements, which were created through a process of readjusting collage elements, much like a jazz musician searching for the right sound. With Mel Kendrick (American, b. 1949), the artist begins with a block of wood and the process of deconstruction and reconstruction in turn becomes the content. The sculptures are unplanned; no sketches or drawings are made in advance. The cutting and stacking of the forms is executed in real time. The investigations in assembling the elements embody time as an important element, and the artist insists that he must be surprised by the finished product each time.

David Hartt's (Canadian, b. 1967) luscious platinum print, *Olimpia*, is a still from his film that features cellist Tomeka Reid at Philip Johnson's Glass House in Connecticut. This portrait of Tomeka, who wears a bronze helmet reminiscent of Brancusi and evokes *Les Contes d'Hoffmann*, in the context of the Glass House shows us once more how Hartt's research-based work builds narratives on top of existing histories to renegotiate and reinvent the boundaries of historical perspective.

Ian Hamilton Finlay's (Scottish, 1925-2006) 1998 carved stone piece reverberates throughout the gallery with its text "Only Connect", alluding to E.M. Forster's book *Howard's End*. Only through connecting can we live a purposeful life of intentional thought and genuine feeling. Finlay was a poet, philosopher, sculptor, and gardener who created one of the wonders of the world outside Edinburgh: *Little Sparta*, Finlay's lifelong artwork (1966-2006) in the form of a cultivated 6-acre magical garden with pathways and streams meandering through the hilled landscape, interspersed with poetic texts on branches, plaques, and sculptures alluding to ancient and contemporary culture that open the mind to magnificent visions.

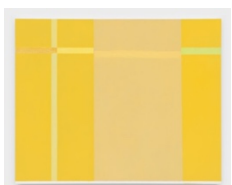
The exhibition will also present two Brazilian artists whose work is rarely seen in North America. Both artists work with color, texture, and volume, but their media differs. Norberto Nicola (Brazilian, 1931-2007) subverted the flat form of tapestry work by twisting and braiding thread, wool, and mane in multidimensional compositions that suggest a background of geometry. The organic form of Nicola's work is placed in conversation with Paulo Pasta's (Brazilian, b. 1949) distinctly vivid palettes and precise lines. Pasta's paintings are representations of imagined spaces, where parallel, perpendicular, or diagonal lines suggest a contemplative and metaphysical architecture.

This exhibition will be followed by sculptures and installations by Chakaia Booker through the end of June.

LANDING



**Paulo Pasta** (b. 1959)  
Untitled, 2021  
oil on canvas  
31 1/2 x 39 3/8 in (80 x 100 cm)  
(PAP8390)



**Paulo Pasta** (b. 1959)  
Untitled, 2021  
oil on canvas  
31 1/2 x 39 3/8 in (80 x 100 cm)  
(PAP8388)



**George Grosz** (1893-1959)  
*Stickman*, 1946  
watercolour and brush and ink on paper (recto); brush and  
ink on paper (verso)  
21 7/8 x 14 1/8 in (55.5 x 36 cm)  
(PP7957)

NORTH GALLERY



**Dorothea Rockburne** (b. 1932)  
*A Champion Seducer*, 1989  
water-based paint on board  
framed: 56 3/4 x 93 5/8 in (144.1 x 237.6 cm)  
(ROC7947)



**Mel Kendrick** (b. 1949)  
*6 Green Blocks*, 2004  
walnut and Japan color  
each: 6 x 4 x 4 in (15.2 x 10.2 x 10.2 cm)  
(KEN0532)



**Norberto Nicola** (1930-2007)  
*XAMÁ*, 1997  
wool in handloom, with vegetable fibers, horsehair, and pigments  
82 5/8 x 55 1/8 in (210 x 140 cm)  
(NN8539)



**Ciprian Mureșan** (b. 1977)  
*Palimpsest Artforum March 2006, 2016*  
graphite on paper  
framed: 59 3/4 x 82 1/4 in (151.8 x 208.9 cm)  
(CM6256)



**Jorinde Voigt** (b. 1977)  
*Dyade 13, 2022*  
gilded stainless steel, framed  
30 1/2 x 47 1/4 x 40 3/8 in (77.5 x 120 x 102.5 cm)  
(JV8707)



**Jorinde Voigt** (b. 1977)  
*Black Rhythm (2), 2022*  
oil chinks, graphite on paper on wood in artist's frame  
33 x 26 x 3 1/2 in (83.8 x 65.9 x 8.9 cm)  
(JV8476)

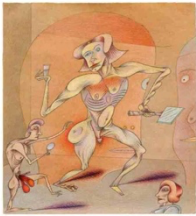


**Gordon Matta-Clark** (1943-1978)  
*Arrows*, n.d.  
permanent marker on paper  
19 x 24 1/2 in (48.3 x 62.2 cm)  
(GMC7138)



**Gordon Matta-Clark** (1943-1978)  
Untitled, n.d.  
permanent marker on paper  
19 x 24 in (48.3 x 61 cm)  
(GMC7139)

## HALLWAY



**Jim Nutt** (b. 1938)  
*just a little Bit, perhaps?*, 1978  
colored pencil on paper  
11 x 10 in (27.9 x 25.4 cm)  
(PP8000)



**Jorinde Voigt** (b. 1977)  
*Views on Views on Decameron – 32 Views (I-II)*, 2012  
ink, pencil on paper, colored vellum; diptych  
each sheet: 40 x 26 in (101.6 x 66 cm)  
(JV6001)



**Mel Kendrick** (b. 1949)  
Untitled, 2009  
pigmented plaster  
12 ¼ x 4 ¾ x 5 in (31.1 x 12.1 x 12.7 cm)  
(KEN2788)



**Markus Lüpertz** (b. 1941)  
*Untitled (Death in a Suit)*, 1976  
charcoal, ink and gouache on red Ingres paper  
26 x 19 in (65.9 x 48.4 cm)  
(ML2987)



**A.R. Penck** (1939-2017)  
Untitled, ca. 1978  
pencil on paper  
23 ¼ x 16 ½ in (59.1 x 41.9 cm)  
(AP0609)



**Julia Fish** (b. 1950)  
*Trace 2 : after Threshold, SouthEast – Two [ spectrum : orange with grey ]*, 2016  
ink on UV paper  
11 ½ x 17 ½ in (29.2 x 44.5 cm)  
(JF6247)

## SOUTH GALLERY



**Jonathan Meese** (b. 1970)  
*GUIDO QUILLERZ A.R.T. IS BACK!*, 2018  
oil and acrylic on canvas  
82 7/8 x 55 1/4 in (210.4 x 140.2 cm)  
(JM6949)



**Jonathan Meese** (b. 1970)  
*FAST NIX GEHT MEHR, JAVA JIMI!*, 2022  
acrylic on canvas  
47 1/2 x 39 1/2 x 1 1/4 in (120.5 x 100.3 x 3.3 cm)  
(JM8424)



**Barry Le Va** (1941-2021)  
*Diagram for Two Separate Installations Combined into One Installation: Combined in Two Perspectives #9*, 1981  
ink, graphite, oil stick, and cut-and-pasted vellum on paper  
59 x 59 in (149.9 x 149.9 cm)  
(BL2845)



**David Hartt** (b. 1967)  
*Olimpia*, 2022  
platinum print  
image: 23 5/8 x 16 in (60 x 40.6 cm)  
sheet: 29 1/2 x 22 in (74.9 x 55.9 cm)  
framed: 44 1/4 x 36 3/8 in (112.4 x 92.4 cm)  
(DH8375)



**Dieter Roth** (1930-1998)  
*Two Bulbs*, 1970  
lightbulbs, glue, plexiglass  
12 1/2 x 16 in (31.8 x 40.6 cm)  
(DR0147)



**Dieter Roth (1930-1998)**  
*Shedheads at Oelper*, 1973  
soft cheese over planographic printing (hand offset) dark brown, white card in plastic sleeve  
12 1/2 x 19 3/8 in (31.8 x 49.1 cm)  
(DR0543)



**Dieter Roth (1930-1998)**  
*Motorradfahrer (Motorcyclist)*, 1969  
acrylic over toy motorcycle  
4 15/16 x 6 3/4 x 4 1/2 in (12.5 x 17.1 x 11.4 cm)  
(DR0103)



**Ian Hamilton Finlay (1925-2006)**  
*Only Connect*, 1998  
stone, with John Andrew  
7 7/8 x 11 1/2 x 1 7/8 in (20 x 29.2 x 4.7 cm)  
(IF6911)



**Jörg Immendorff (1945-2007)**  
*Café Deutschland (Winter)*, 1981  
oil on paper mounted to muslin over board  
40 x 35 3/4 in (101.6 x 90.8 cm)  
(JI7069)



**Mel Kendrick (b. 1949)**  
*Untitled*, 2022  
mahogany and artist-designed base  
52 x 38 x 18 1/2 in (132.1 x 96.5 x 47 cm)  
(KEN8630)



**Dieter Roth (1930-1998)**  
*Kleiner K mit grossern*, 1984  
graphite on paper  
12 3/4 x 9 1/2 in (32.4 x 24.1 cm)  
(DR0550)



**Jorinde Voigt** (b. 1977)

*Yellow Rhythm (1)*, 2022

ink, oil stick, graphite and paper in artist's frame

41 1/2 x 27 3/4 x 2 1/4 in (105.3 x 70.6 x 5.7 cm)

framed: 46 3/8 x 32 3/4 x 5 in (118 x 83 x 12.7 cm)  
(JV8421)